



COPELAND CREEK RESTORATION

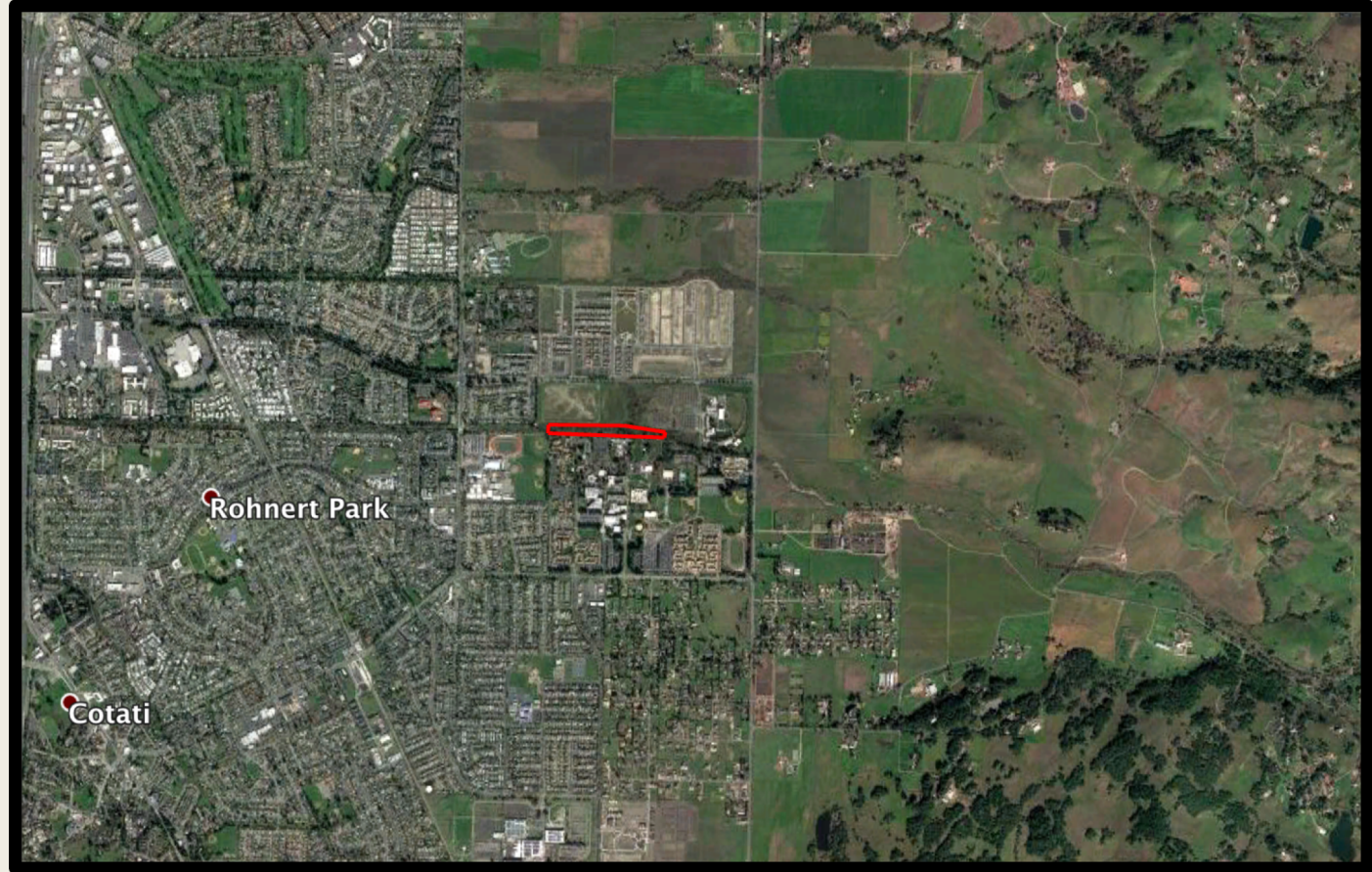


Presented by: Hector, Tyler, and Samanta



Project Site

- Copeland Creek,
Sonoma State University





COPELAND CREEK

Goals and Objectives

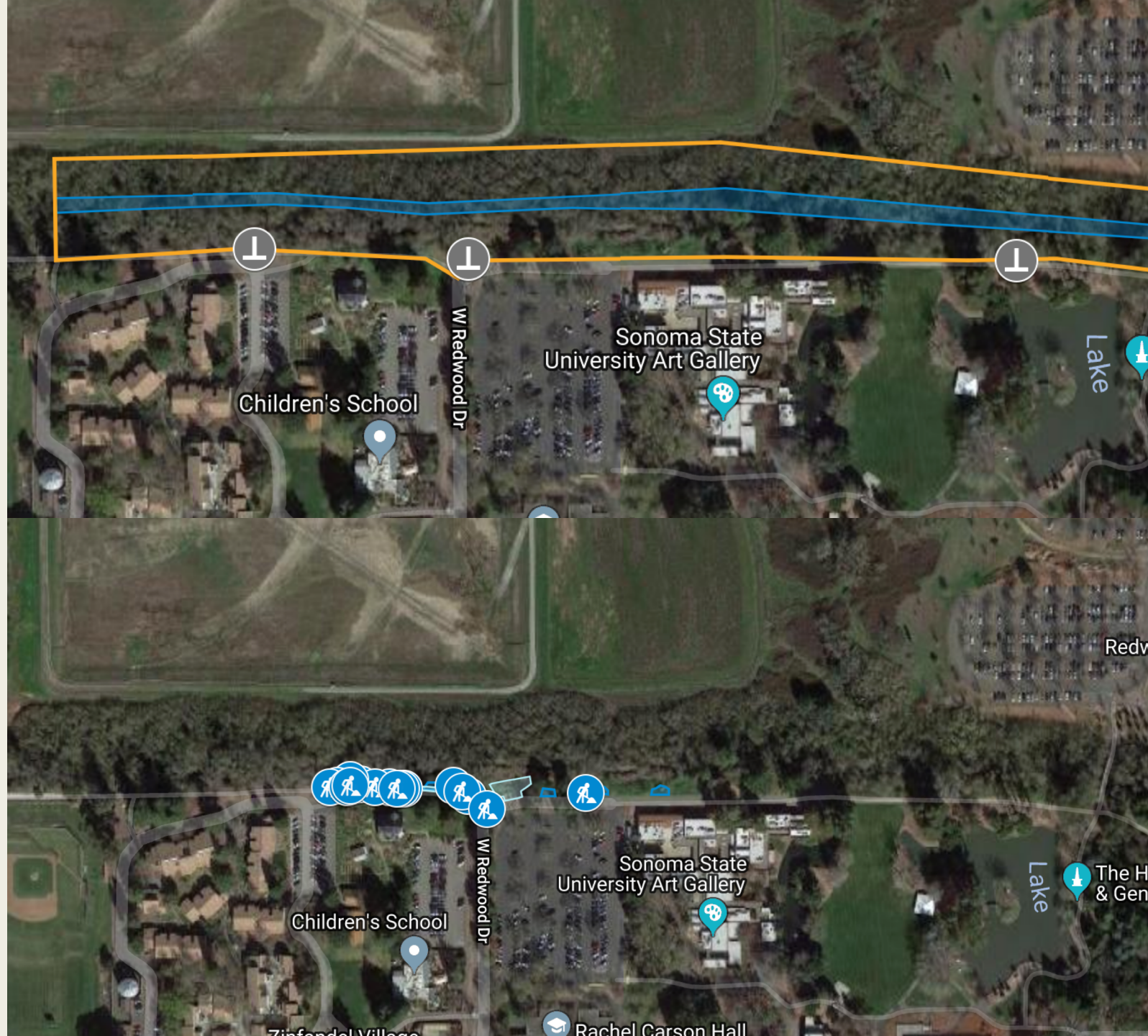
■ Goals:

- Increase native plant cover
- Maintain flood control
- Create a recreational and educational landscape

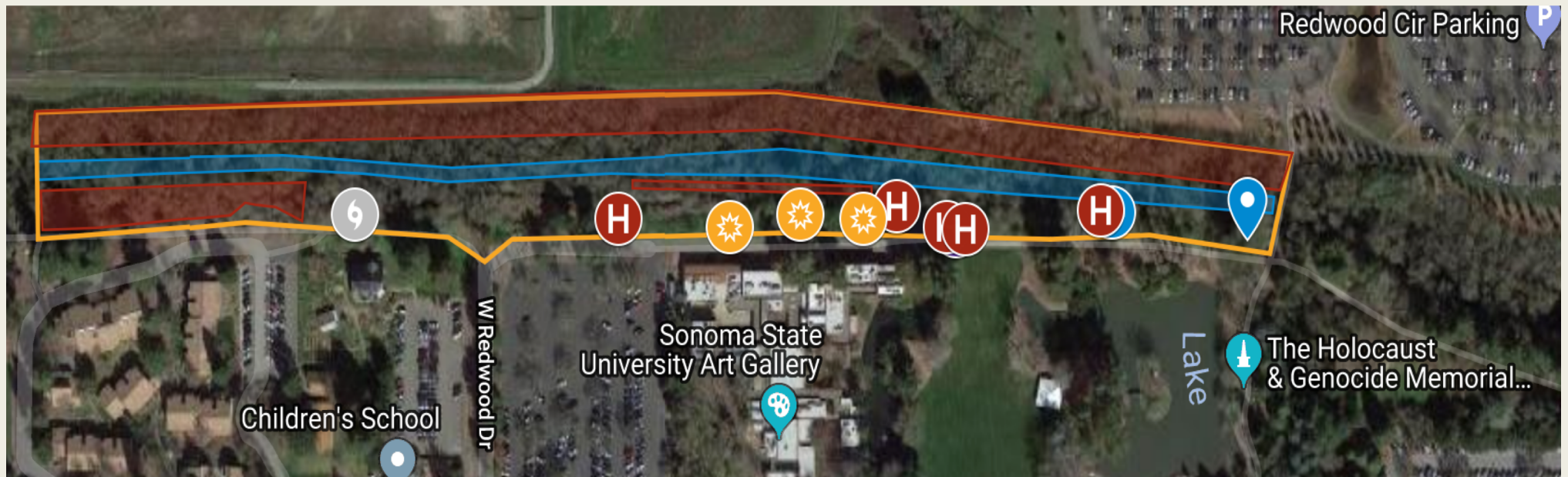
■ Objectives

- Remove 50% of invasives
- Increase native biodiversity by 25%
- Clear debris from creek bed
- Clear paths and create volunteer programs

SIMILAR PROJECTS IN THE AREA



Project Design



Plans for monitoring

- Documentation of:
 - *Original conditions*
 - *Native plants planted*
 - *Project changes*
- Post Project Completion
 - *Annual survey*
 - *Record new site conditions*
 - *Comparison*

Desired Outcomes

- 50% removal of invasive species,
- 25% increase in native biodiversity
- 70% of debris cleared.
- A lasting monitoring and plant care program

Impacts for Fish and Wildlife Management

- Fish
 - *No significant impact*
- Wildlife
 - *Short term impact*
 - *Long term positive effect on plants and animals*



Costs

Activities	Cost
Labor	\$0
Plants	\$750
Irrigation	\$400
Plant Removal	\$1,500
Total	\$2,650



THANK YOU