

# Canopy Cover and Biofilm Prevalence at Fairfield Osborn Preserve

Ruby Wagner, Carly Spencer, William Deal, Jack  
Sigismondo



School of Science and technology

# Research question

In what ways does light exposure affect the prevalence of biofilm on rocks located in streams at the Fairfield Osborn Preserve?



# Hypothesis

- There will be a greater presence of biofilm on rocks in areas more exposed to sunlight than there will be in those that are more shaded





# Background I

- Biofilm is a slimy substance comprised of combined microorganisms (Donlan, 2002)
- Biofilm can grow on different surfaces (Donlan, 2002)
- Light interacts with microorganisms differently (Josrgenson, 1969)



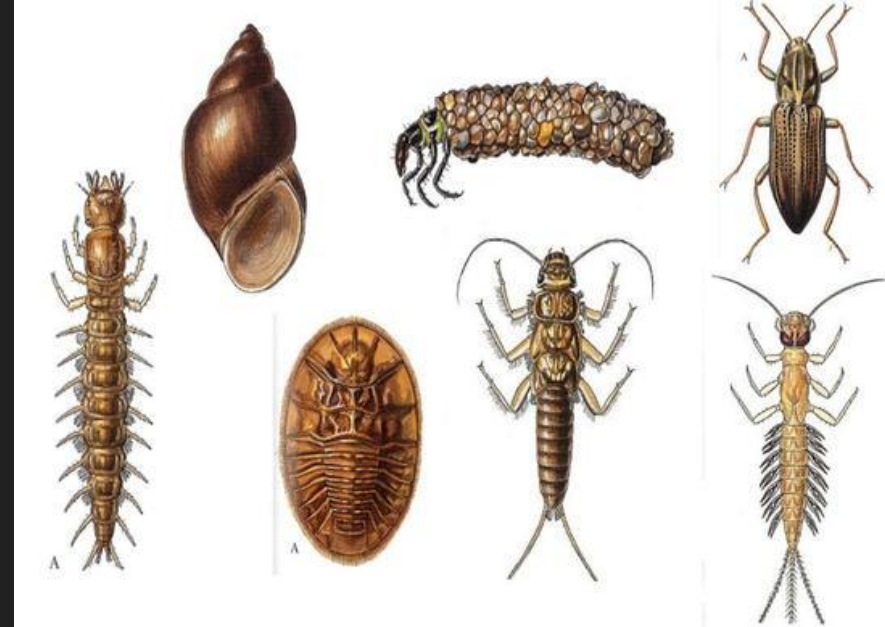
phys.org



<https://effectsofbiofilms.weebly.com/>

# Background II

- Biofilm is often comprised of primary producers (Persson, 2014)
- Macroinvertebrates and other organisms use biofilm as a source of nutrients (Persson, 2014)
- This means that the amount of biofilm can impact the population of an entire ecosystem



# Methods I

- Tested in the stream between the parking lot and nature center
- At every two meters of our test area we measured the following:
  - Amount of slime in cm from one end of the stream to the other at each transect
  - Canopy cover



# Methods II

## Equipment:

- Densiometer
- Measuring tape
- Flags (markers)



[www.overtonpark.org](http://www.overtonpark.org)



[amazon.com](http://amazon.com)



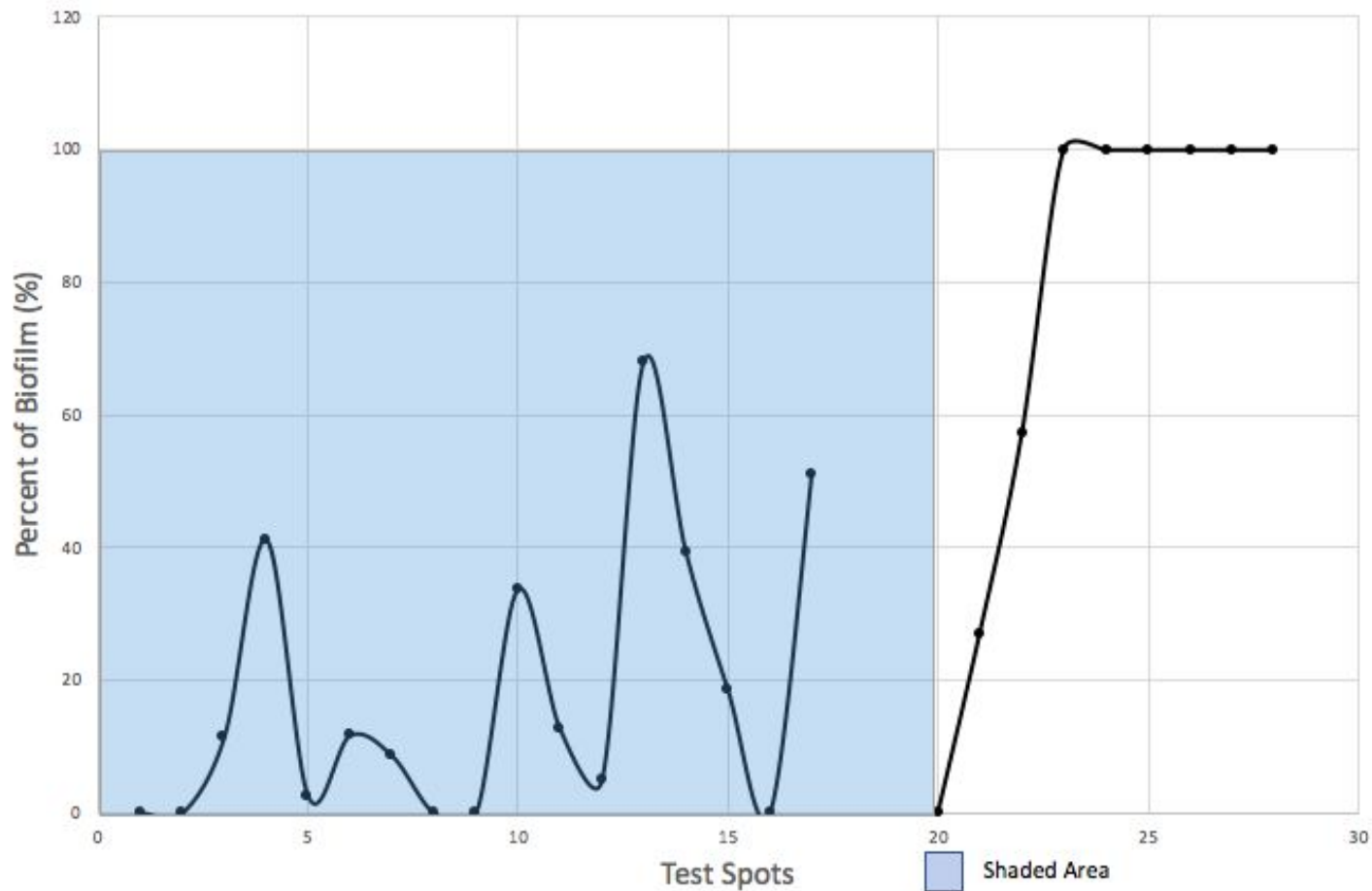
# Results

- Our data shows the amount of biofilm present on rocks depending on the amount of canopy cover
- Our data confirmed our hypothesis

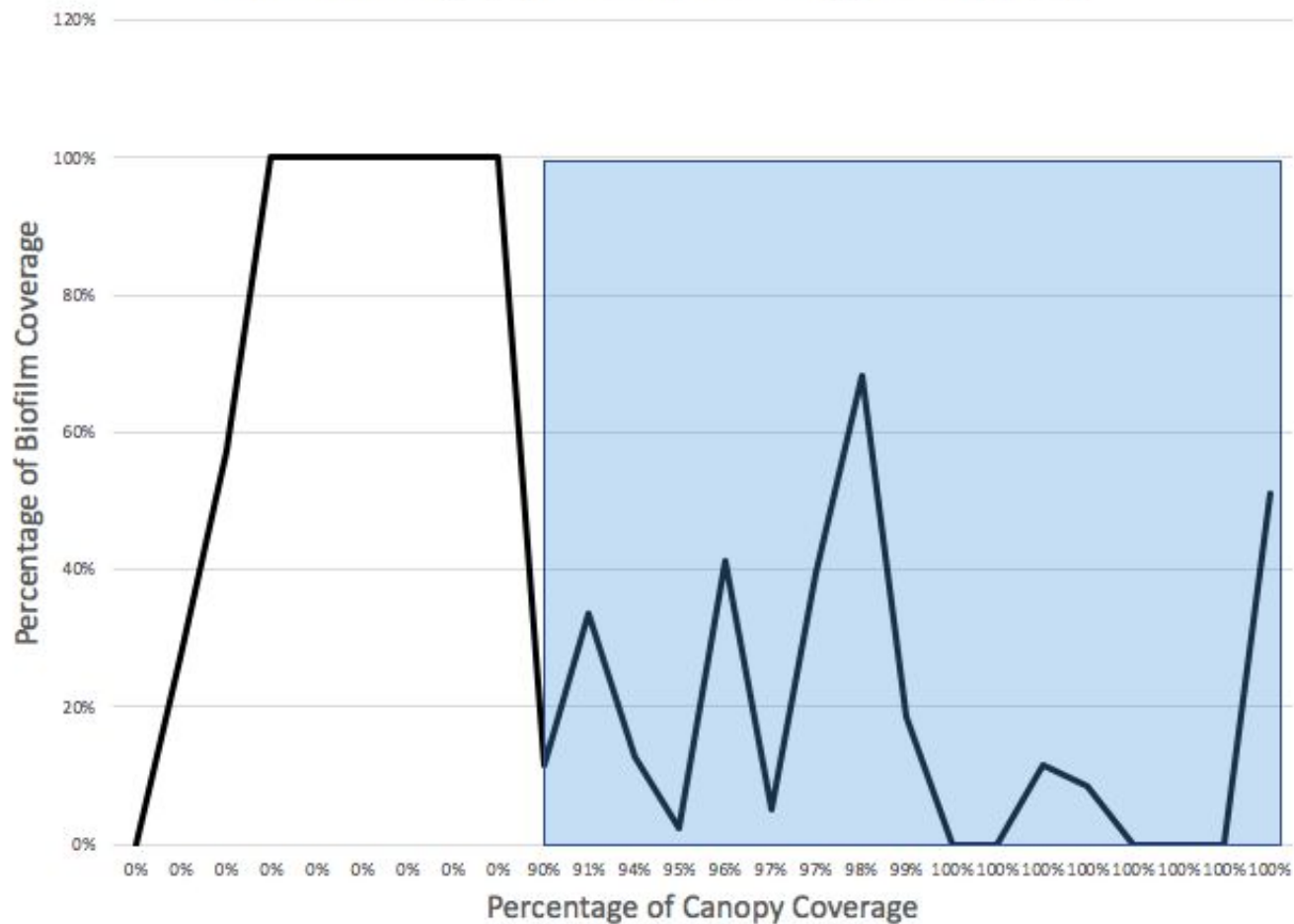




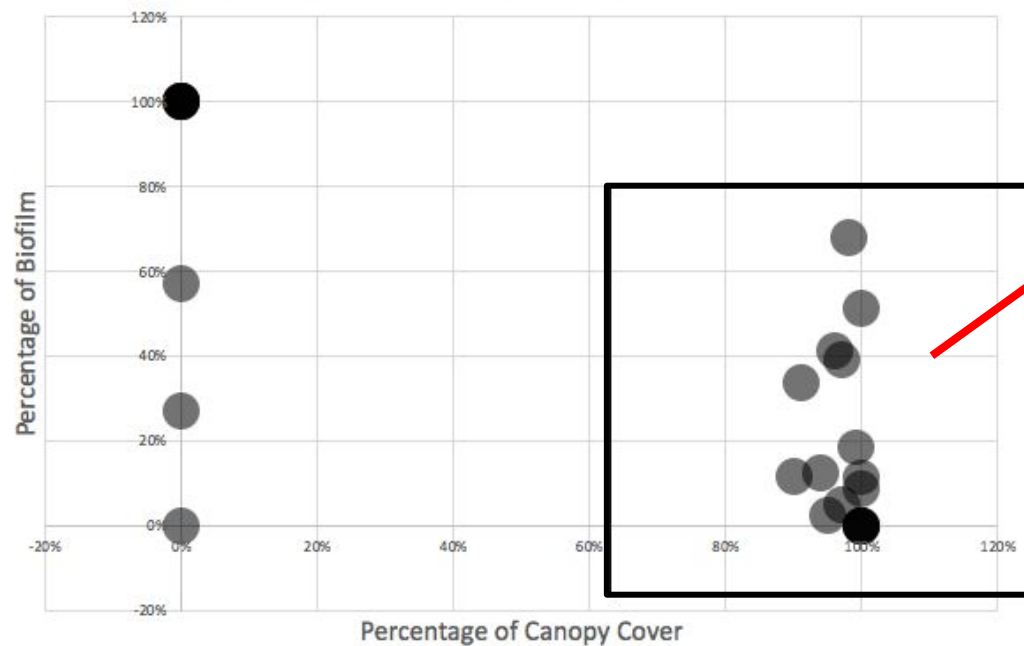
Biofilm Coverage at Each Test Spot (%)



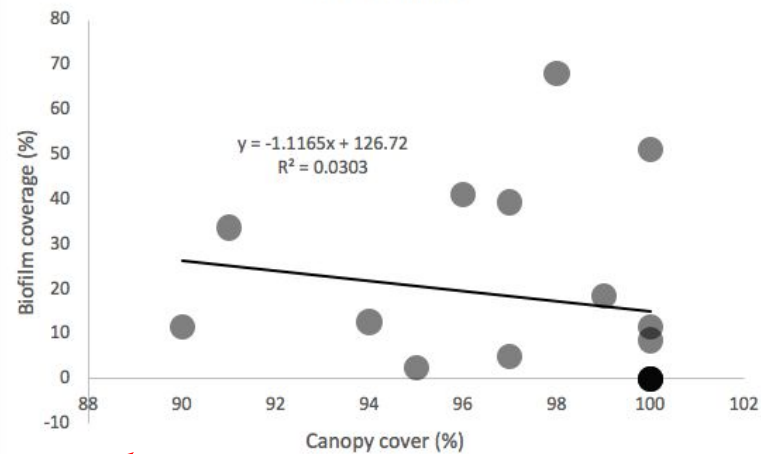
Biofilm Coverage (%) in Relation to Canopy Coverage (%)



Overall Biofilm Coverage in Relation to Canopy Cover



Non-zero Values



# Conclusions

- Can be used to predict where biofilm might be more prevalent
- Biofilm serves as an important source of nutrients for macroinvertebrates and other primary consumers





# References

- Ledford, S. H., Lautz, L. K., Vidon, P. G., & Stella, J. C. (2017). Impact of seasonal changes in stream metabolism on nitrate concentrations in an urban stream. *Biogeochemistry*, 133(3), 317-331.
- Zedler, J. B. (1980). Algal mat productivity: comparisons in a salt marsh. *Estuaries*, 3(2), 122-131.
- Stevenson, R. J., Rier, S. T., Riseng, C. M., Schultz, R. E., & Wiley, M. J. (2006). Comparing effects of nutrients on algal biomass in streams in two regions with different disturbance regimes and with applications for developing nutrient criteria. In *Advances in Algal Biology: A Commemoration of the Work of Rex Lowe* (pp. 149-165). Springer, Dordrecht.
- Warren, D. R., Keeton, W. S., Bechtold, H. A., & Rosi-Marshall, E. J. (2013). Comparing streambed light availability and canopy cover in streams with old-growth versus early-mature riparian forests in western Oregon. *Aquatic sciences*, 75(4), 547-558.
- Donlan RM. Biofilms: microbial life on surfaces. *Emerg Infect Dis*. 2002;8(9):881-90.
- Jørgensen, E. G. (1969). The adaptation of plankton algae IV. Light adaptat

# Thank you!

